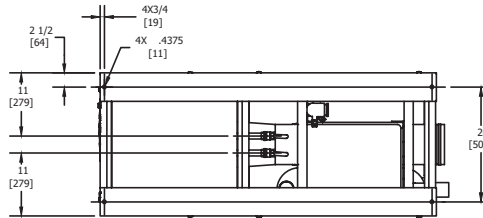
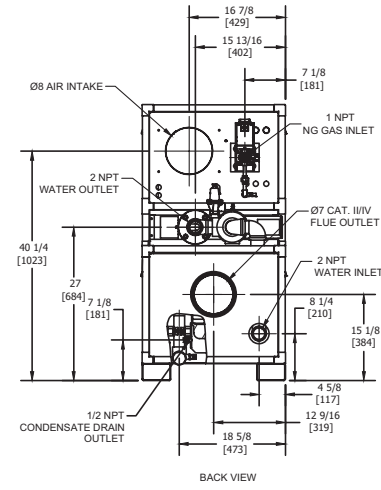
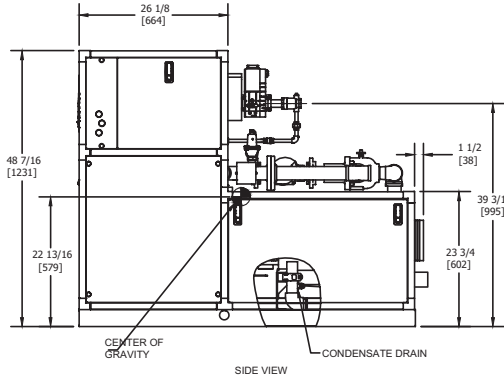
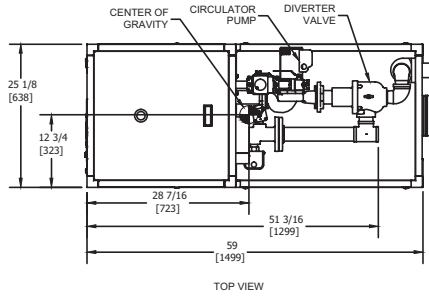


# INDOOR UNIT

RSUB-96 REV H

## CODE OPTIONS

**CSD-1** Manual Reset LWCO



**Notes:**

1. Dimensions are approximate and should not be used to "rough-in" equipment.
2. Dimensions are subject to change without notice.

## BOILER CERTIFIED RATINGS & CAPACITIES

<b>Fuel Type</b>	Natural/Propane Gas	<b>Total FLA</b>	9.2*
<b>Input BTU/hr.</b>	500,000 / 147 kW	<b>Min. Gas Pressure Required</b>	2" W.C.**
<b>Output BTU/hr.</b>	475,500 / 139 kW	<b>Max. Gas Pressure Allowed</b>	14" W.C.
<b>Electrical Requirements</b>	(L1, NEU, GND) 120 VAC / 1 ph / 60 hz	<b>Operating Weight</b>	766 lbs. / 348 kg.

## BOILER TEMPERATURE RISE / PRESSURE DROP

15°F / 8.3°C			
Flow Rate***	Total Loss****		
GPM	L/s	Ft	kPa
58.0	3.7	8.8	26.3

\*\*\* Primary heat exchanger.  
\*\*\*\* Includes primary, secondary, mixing valve and piping.

## BOILER / WATER HEATER TRIM & CONTROLS

<b>Main Gas Valve</b>	Dungs MBC-SE	<b>Air Switch</b>	Cleveland NS2
<b>Firing Valve</b>	1"	<b>Blower Motor</b>	Fasco 1/2 hp
<b>Ignition Control</b>	Honeywell RM7895C	<b>Relief Valve - CW</b>	3/4" x 3/4" set @ 125 psi
<b>Operating Control</b>	HeatNet®	<b>Relief Valve - CB</b>	3/4" x 3/4" set @ 50 psi
<b>High Limit</b>	Jumo	<b>Flow Switch</b>	TACO
<b>Main Ball Valve</b>	1"	<b>Pilot Regulator</b>	White-Rodgers 25m
<b>Economizer</b>	RBI-1000	<b>Circulator</b>	B&G PL-130 - FLA - 5
<b>Mixing Valve</b>	2"	<b>By-Pass Piping</b>	2"

## WATER HEATER HOURLY RECOVERY CAPACITY (GPH & LPH)

40°F	22°C	60°F	33°C	80°F	44°C	100°F	56°C	120°F	67°C	140°F	78°C
1,460	5,519	973	3,679	730	2,760	584	2,208	487	1,840	417	1,577

## A.S.M.E.

<b>ASME Sect IV Htg Surface</b>	69.51 Sq. Ft. / 6.46 Sq. M.	<b>Design Data</b>	Max. 125 psig & 250°F
<b>Water Volume</b>	3.4 gal. / 12.91 Liters		
<b>Water Volume Secondary HX</b>	4.5 gal. / 17.03 Liters		

\* Includes pump  
\*\* For incoming gas pressures lower than 2" W.C. natural or propane, consult factory.

**REP FIRM** \_\_\_\_\_  
**SUBMITTED BY** \_\_\_\_\_  
**JOB NAME** \_\_\_\_\_  
**ARCHITECT** \_\_\_\_\_  
**ENGINEER** \_\_\_\_\_  
**CONTRACTOR** \_\_\_\_\_  
**DATE** \_\_\_\_\_

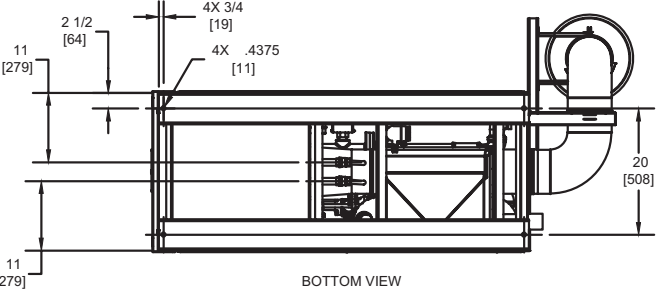
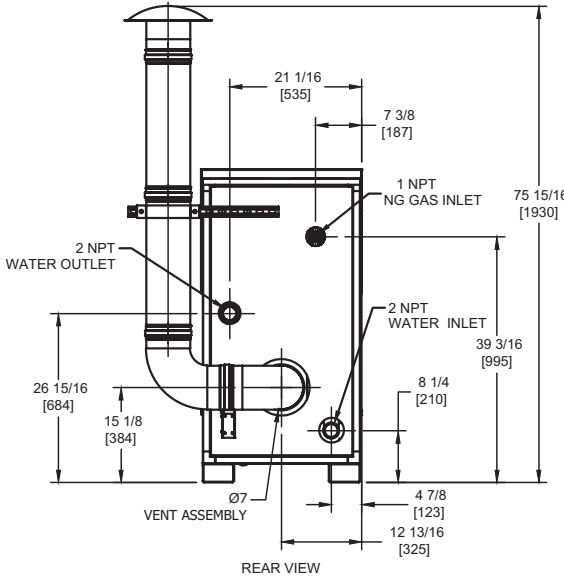
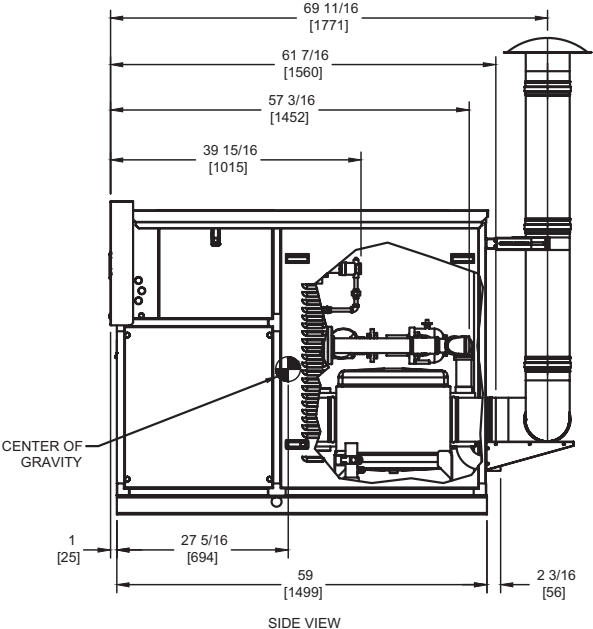
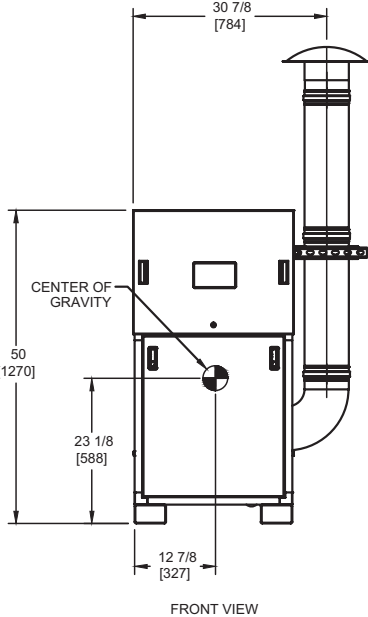
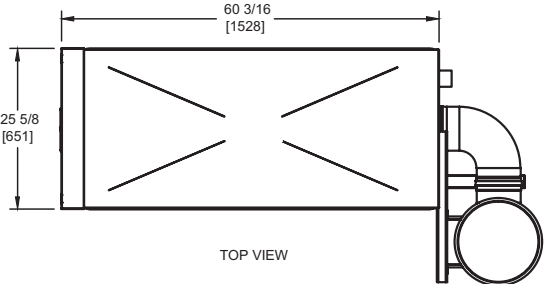
## FUTERA FUSION 500

**Category II or IV Appliance**  
(see Installation and Operation Manual for venting information)



A Division of Mestek, Inc.  
Westfield, MA 01085  
(413) 568-9571

# OUTDOOR UNIT



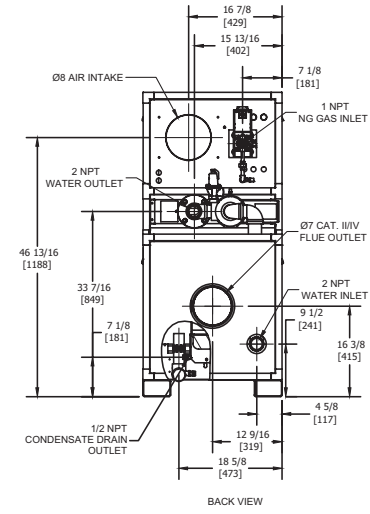
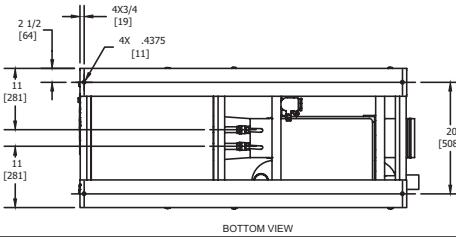
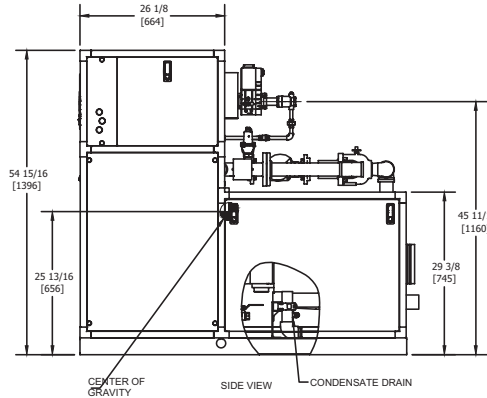
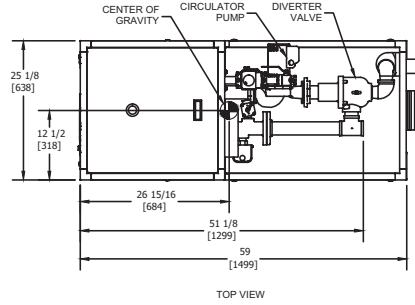
**FUTERA FUSION 500**

- Notes:**
1. Dimensions are approximate and should not be used to "rough-in" equipment.
  2. Dimensions are subject to change without notice.

# INDOOR UNIT

## CODE OPTIONS

**CSD-1** Manual Reset LWCO



- Notes:**  
 1. Dimensions are approximate and should not be used to "rough-in" equipment.  
 2. Dimensions are subject to change without notice.

## BOILER CERTIFIED RATINGS & CAPACITIES

<b>Fuel Type</b>	Natural/Propane Gas	<b>Total FLA</b>	9.2*
<b>Input BTU/hr.</b>	750,000 / 220 kW	<b>Min. Gas Pressure Required</b>	2" W.C.**
<b>Output BTU/hr.</b>	713,250 / 209 kW	<b>Max. Gas Pressure Allowed</b>	14" W.C.
<b>Electrical Requirements</b>	(L1, NEU, GND) 120 VAC / 1 ph / 60 hz	<b>Operating Weight</b>	793 lbs. / 360 kg.

## BOILER TEMPERATURE RISE / PRESSURE DROP

20°F / 11.1°C				25°F / 13.9°C			
Flow Rate***	Total Loss****	Flow Rate***	Total Loss****	Flow Rate***	Total Loss****	Flow Rate***	Total Loss****
GPM	L/s	Ft	kPa	GPM	L/s	Ft	kPa
65.3	4.1	10.5	31.4	52.2	3.3	7.7	23.0

\*\*\* Primary heat exchanger.  
 \*\*\*\* Includes primary, secondary, mixing valve and piping.

## BOILER / WATER HEATER TRIM & CONTROLS

<b>Main Gas Valve</b>	Dungs MBC-SE	<b>Air Switch</b>	Cleveland NS2
<b>Firing Valve</b>	1"	<b>Blower Motor</b>	Fasco 1/2 hp
<b>Ignition Control</b>	Honeywell RM7895C	<b>Relief Valve - CW</b>	3/4" x 3/4" set @ 125 psi
<b>Operating Control</b>	HeatNet®	<b>Relief Valve - CB</b>	3/4" x 3/4" set @ 50 psi
<b>High Limit</b>	Jumo	<b>Flow Switch</b>	TACO
<b>Main Ball Valve</b>	1"	<b>Pilot Regulator</b>	White-Rodgers 25m
<b>Economizer</b>	RBI-1000	<b>Circulator</b>	B&G PL-130 - FLA - 5
<b>Mixing Valve</b>	2"	<b>By-Pass Piping</b>	2"

## WATER HEATER HOURLY RECOVERY CAPACITY (GPH & LPH)

40°F	22°C	60°F	33°C	80°F	44°C	100°F	56°C	120°F	67°C	140°F	78°C
2,168	8,194	1,445	5,462	1,084	4,097	867	3,277	723	2,731	619	2,341

## A.S.M.E.

<b>ASME Sect IV Htg Surface</b>	97.79 Sq. Ft. / 9.08 Sq. M.	<b>Design Data</b>	Max. 125 psig & 250°F
<b>Water Volume</b>	3.7 gal. / 14.01 Liters		
<b>Water Volume Secondary HX</b>	4.5 gal. / 17.03 Liters		

\* Includes pump  
 \*\* For incoming gas pressures lower than 2" W.C. natural or propane, consult factory.

**REP FIRM** \_\_\_\_\_

**SUBMITTED BY** \_\_\_\_\_

**JOB NAME** \_\_\_\_\_

**ARCHITECT** \_\_\_\_\_

**ENGINEER** \_\_\_\_\_

**CONTRACTOR** \_\_\_\_\_

**DATE** \_\_\_\_\_

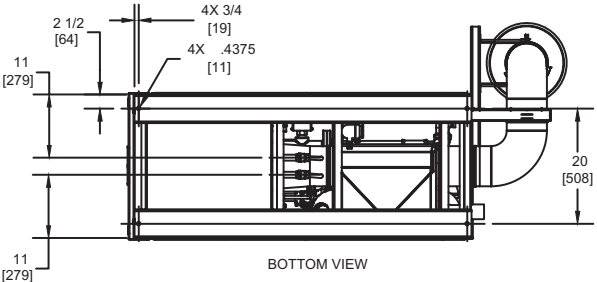
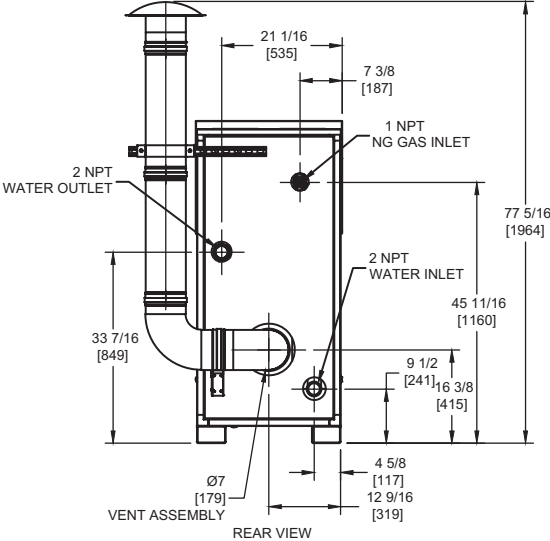
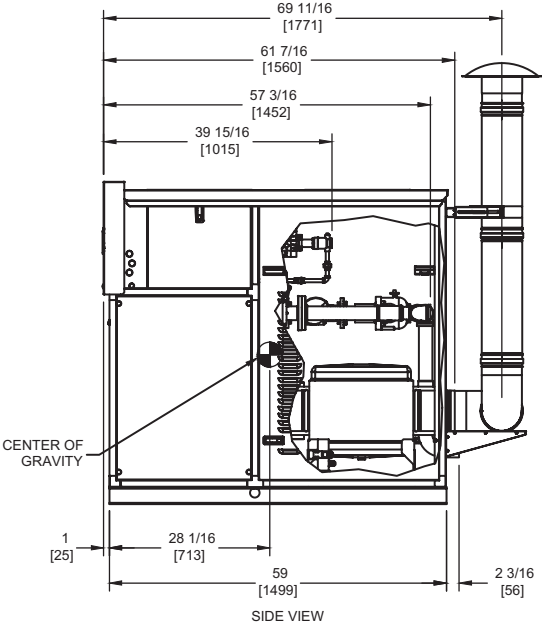
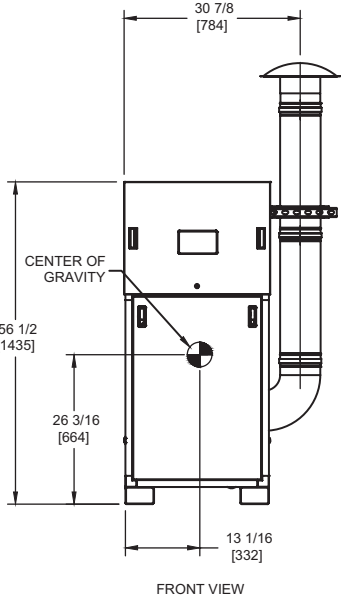
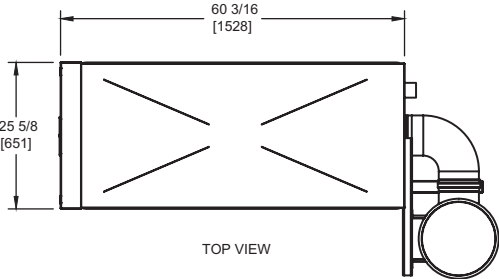
**FUTERA FUSION 750**

**Category II or IV Appliance**  
 (see Installation and Operation Manual for venting information)

**RBI**® A Division of Mestek, Inc.  
 Westfield, MA 01085  
 (413) 568-9571

RELIABLE. BOLD. INNOVATIVE.

# OUTDOOR UNIT



## FUTERA FUSION 750

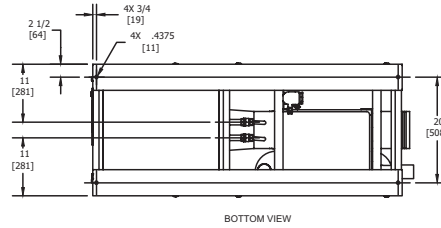
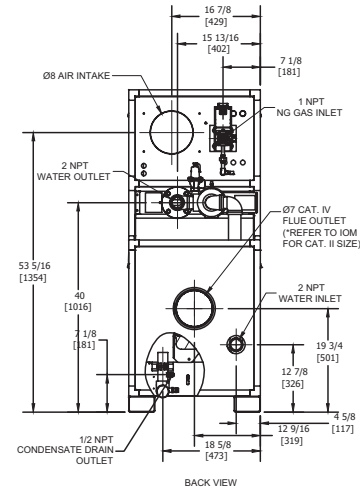
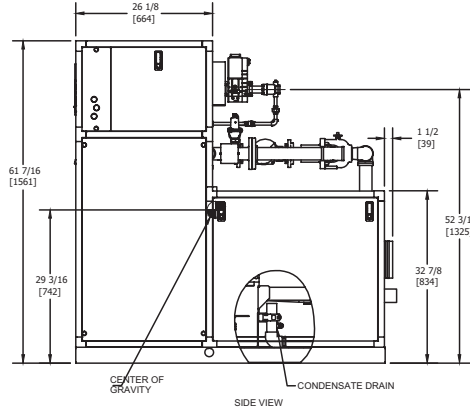
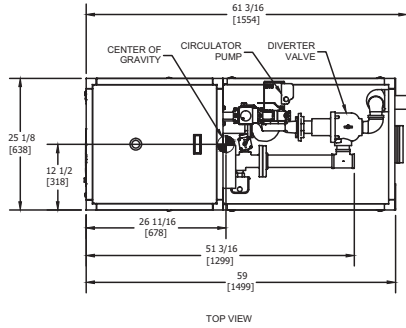
- Notes:**
1. Dimensions are approximate and should not be used to "rough-in" equipment.
  2. Dimensions are subject to change without notice.

# INDOOR UNIT

RSUB-98 REV H

## CODE OPTIONS

CSD-1 Manual Reset LWCO



### Notes:

1. Dimensions are approximate and should not be used to "rough-in" equipment.
2. Dimensions are subject to change without notice.

## BOILER CERTIFIED RATINGS & CAPACITIES

<b>Fuel Type</b>	Natural/Propane Gas	<b>Total FLA</b>	13.0*
<b>Input BTU/hr.</b>	1,000,000 / 293 kW	<b>Min. Gas Pressure Required</b>	2" W.C.**
<b>Output BTU/hr.</b>	952,000 / 279 kW	<b>Max. Gas Pressure Allowed</b>	14" W.C.
<b>Electrical Requirements</b>	(L1, NEU, GND) 120 VAC / 1 ph / 60 hz	<b>Operating Weight</b>	890 lbs. / 404 kg.

## BOILER TEMPERATURE RISE / PRESSURE DROP

30°F / 16.7°C			
Flow Rate***		Total Loss****	
GPM	L/s	Ft	kPa
58.0	3.7	9.5	28.4

\*\*\* Primary heat exchanger.

\*\*\*\* Includes primary, secondary, mixing valve and piping.

## BOILER / WATER HEATER TRIM & CONTROLS

<b>Main Gas Valve</b>	Dungs MBC-SE	<b>Air Switch</b>	Cleveland NS2
<b>Firing Valve</b>	1"	<b>Blower Motor</b>	Fasco 1/2 hp
<b>Ignition Control</b>	Honeywell RM7895C	<b>Relief Valve - CW</b>	3/4" x 3/4" set @ 125 psi
<b>Operating Control</b>	HeatNet®	<b>Relief Valve - CB</b>	3/4" x 3/4" set @ 50 psi
<b>High Limit</b>	Jumo	<b>Flow Switch</b>	TACO
<b>Main Ball Valve</b>	1"	<b>Pilot Regulator</b>	White-Rodgers 25m
<b>Economizer</b>	RBI-1000	<b>Circulator</b>	B&G PL-130 - FLA - 5
<b>Mixing Valve</b>	2"	<b>By-Pass Piping</b>	2"

## WATER HEATER HOURLY RECOVERY CAPACITY (GPH & LPH)

40°F	22°C	60°F	33°C	80°F	44°C	100°F	56°C	120°F	67°C	140°F	78°C
2,878	10,879	1,919	7,253	1,439	5,440	1,151	4,352	959	3,626	822	3,108

## A.S.M.E.

<b>ASME Sect IV Htg Surface</b>	126.07 Sq. Ft. / 11.71 Sq. M.	<b>Design Data</b>	Max. 125 psig & 250°F
<b>Water Volume</b>	4 gal. / 15.14 Liters		
<b>Water Volume Secondary HX</b>	4.5 gal. / 17.03 Liters		

\* Includes pump

\*\* For incoming gas pressures lower than 2" W.C. natural or propane, consult factory.

**REP FIRM** \_\_\_\_\_  
**SUBMITTED BY** \_\_\_\_\_  
**JOB NAME** \_\_\_\_\_  
**ARCHITECT** \_\_\_\_\_  
**ENGINEER** \_\_\_\_\_  
**CONTRACTOR** \_\_\_\_\_  
**DATE** \_\_\_\_\_

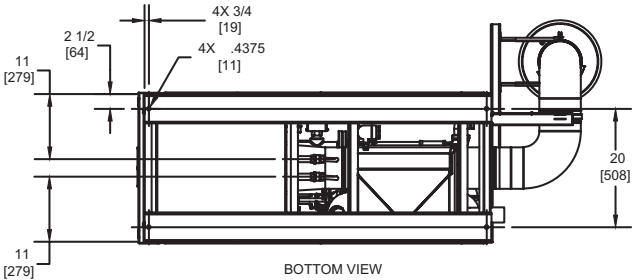
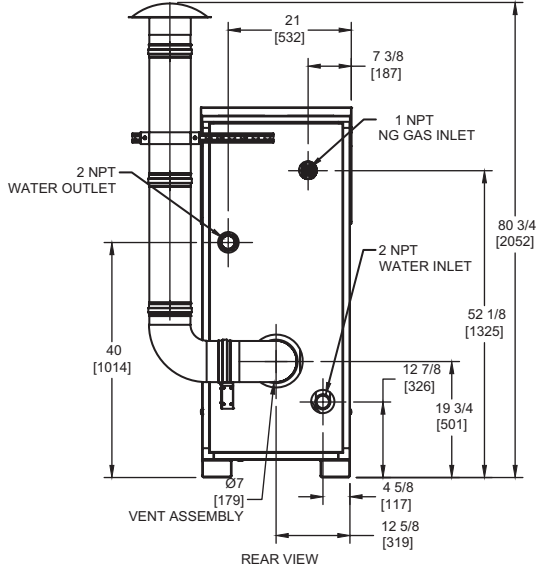
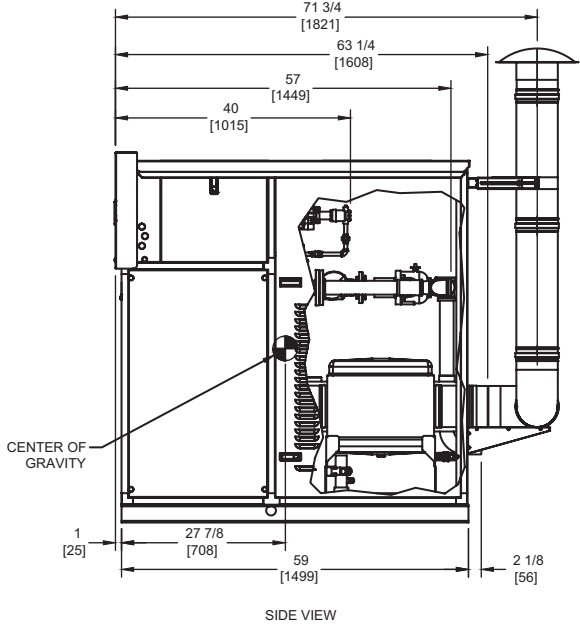
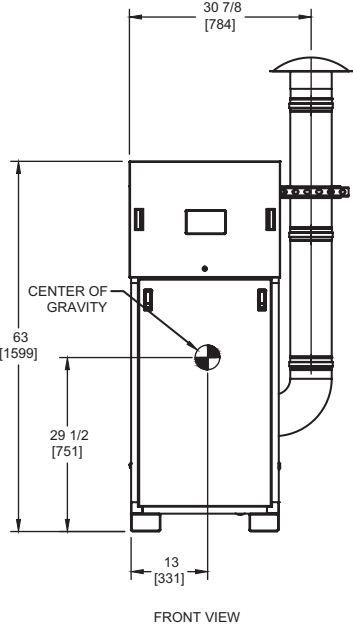
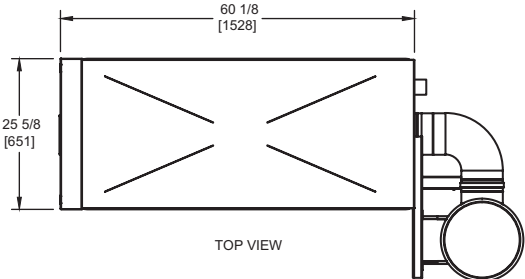
## FUTERA FUSION 1000

**Category II or IV Appliance**  
(see Installation and Operation Manual for venting information)



A Division of Mestek, Inc.  
Westfield, MA 01085  
(413) 568-9571

# OUTDOOR UNIT



## FUTERA FUSION 1000

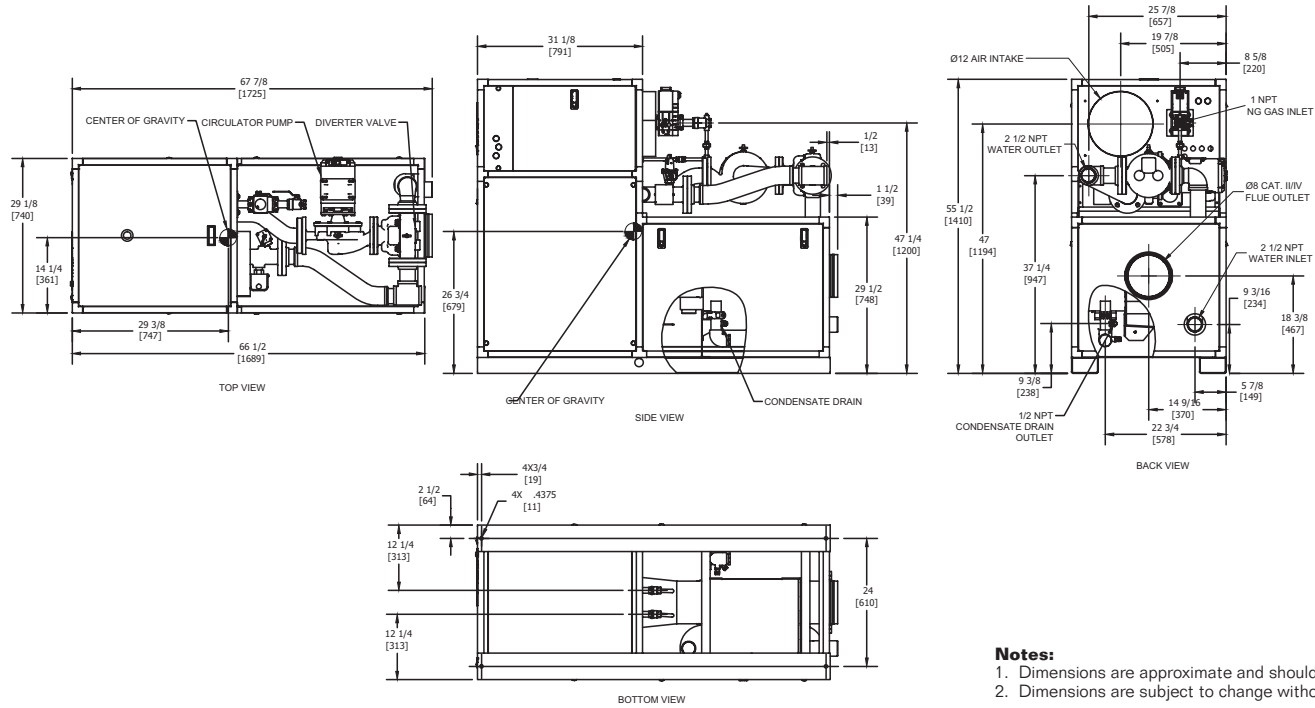
- Notes:**
1. Dimensions are approximate and should not be used to "rough-in" equipment.
  2. Dimensions are subject to change without notice.

# INDOOR UNIT

RSUB-99 REV H

## CODE OPTIONS

**CSD-1** Manual Reset LWCO



- Notes:**
1. Dimensions are approximate and should not be used to "rough-in" equipment.
  2. Dimensions are subject to change without notice.

## BOILER CERTIFIED RATINGS & CAPACITIES

<b>Fuel Type</b>	Natural/Propane Gas	<b>Total FLA</b>	16.7* @ 230V
<b>Input BTU/hr.</b>	1,250,000 / 366 kW	<b>Min. Gas Pressure Required</b>	2" W.C.**
<b>Output BTU/hr.</b>	1,190,000 / 349 kW	<b>Max. Gas Pressure Allowed</b>	14" W.C.
<b>Electrical Requirements</b>	(L1, L2, NEU, GND) 208-240 VAC / 1 ph / 60 hz	<b>Operating Weight</b>	1,171 lbs. / 532 kg.

## BOILER TEMPERATURE RISE / PRESSURE DROP

20°F / 11.1°C				25°F / 13.9°C			
Flow Rate***	Total Loss****			Flow Rate***	Total Loss****		
GPM	L/s	Ft	kPa	GPM	L/s	Ft	kPa
108.8	6.9	10.6	31.7	87.0	5.5	8.2	24.5

\*\*\* Primary heat exchanger.  
\*\*\*\* Includes primary, secondary, mixing valve and piping.

## BOILER / WATER HEATER TRIM & CONTROLS

<b>Main Gas Valve</b>	Dungs MBC-SE	<b>Air Switch</b>	Cleveland NS2
<b>Firing Valve</b>	1"	<b>Blower Motor</b>	Fasco 1 hp
<b>Ignition Control</b>	Honeywell RM7895C	<b>Relief Valve - CW</b>	3/4" x 3/4" set @ 125 psi
<b>Operating Control</b>	HeatNet®	<b>Relief Valve - CB</b>	3/4" x 1" set @ 50 psi
<b>High Limit</b>	Jumo	<b>Flow Switch</b>	TACO
<b>Main Ball Valve</b>	1"	<b>Pilot Regulator</b>	White-Rodgers 25m
<b>Economizer</b>	RBI-1500	<b>Circulator</b>	TACO 1935 (3/4 hp) - FLA 11
<b>Mixing Valve</b>	2 1/2"	<b>By-Pass Piping</b>	2 1/2"


## WATER HEATER HOURLY RECOVERY CAPACITY (GPH & LPH)

40°F	22°C	60°F	33°C	80°F	44°C	100°F	56°C	120°F	67°C	140°F	78°C
3,583	13,543	2,388	9,028	1,791	6,771	1,433	5,417	1,194	4,514	1,024	3,869

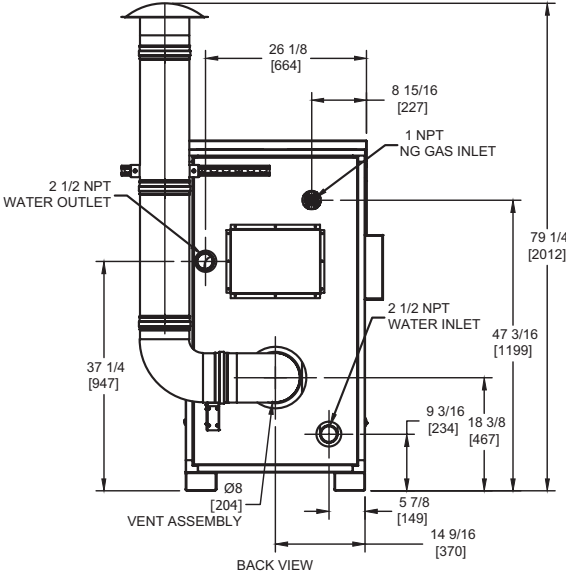
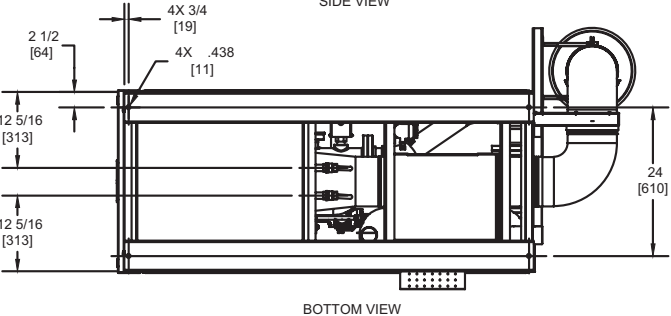
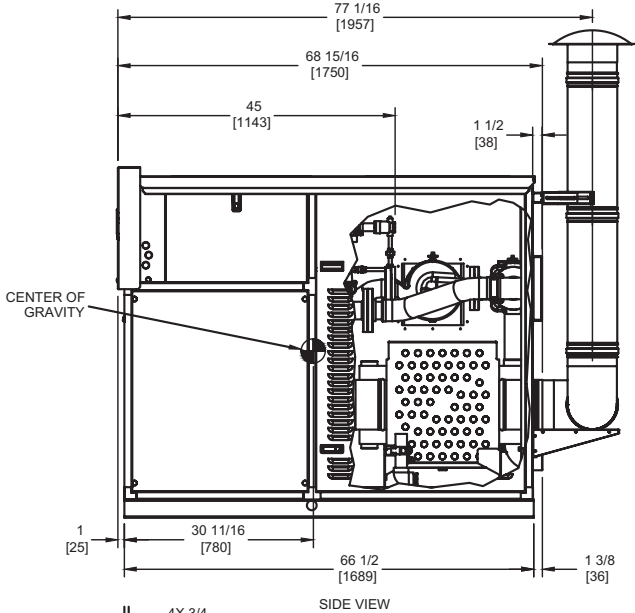
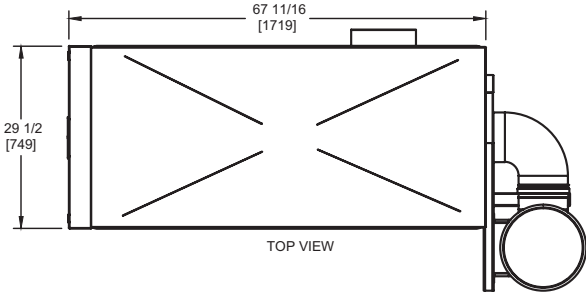
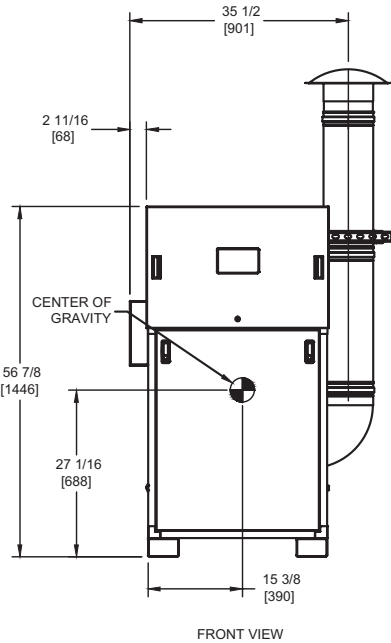
## A.S.M.E.

<b>ASME Sect IV Htg Surface</b>	133.76 Sq. Ft. / 12.43 Sq. M.	<b>Design Data</b>	Max. 125 psig & 250°F
<b>Water Volume</b>	4.7 gal. / 17.79 Liters		
<b>Water Volume Secondary HX</b>	5.9 gal. / 22.56 Liters		

\* Includes pump  
\*\* For incoming gas pressures lower than 2" W.C. natural or propane, consult factory.

<b>REP FIRM</b>	_____	<h1>FUTERA FUSION 1250</h1> <p><b>Category II or IV Appliance</b> (see Installation and Operation Manual for venting information)</p>  <p>A Division of Mestek, Inc. Westfield, MA 01085 (413) 568-9571</p>
<b>SUBMITTED BY</b>	_____	
<b>JOB NAME</b>	_____	
<b>ARCHITECT</b>	_____	
<b>ENGINEER</b>	_____	
<b>CONTRACTOR</b>	_____	
<b>DATE</b>	_____	

# OUTDOOR UNIT



- Notes:**
1. Dimensions are approximate and should not be used to "rough-in" equipment.
  2. Dimensions are subject to change without notice.

**FUTERA FUSION 1250**

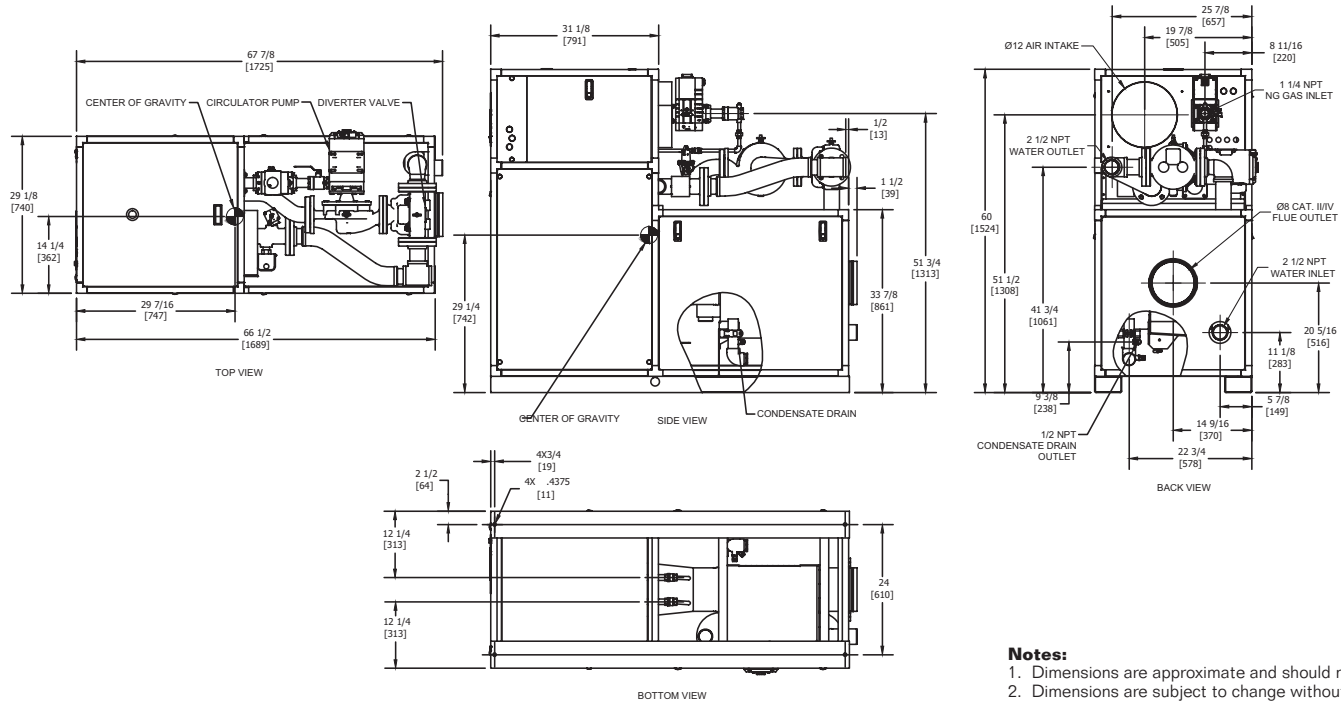


# INDOOR UNIT

RSUB-100 REV H

## CODE OPTIONS

**CSD-1** Manual Reset LWCO



### Notes:

1. Dimensions are approximate and should not be used to "rough-in" equipment.
2. Dimensions are subject to change without notice.

## BOILER CERTIFIED RATINGS & CAPACITIES

<b>Fuel Type</b>	Natural/Propane Gas	<b>Total FLA</b>	18.1* @ 230V
<b>Input BTU/hr.</b>	1,500,000 / 440 kW	<b>Min. Gas Pressure Required</b>	2" W.C.**
<b>Output BTU/hr.</b>	1,429,500 / 419 kW	<b>Max. Gas Pressure Allowed</b>	14" W.C.
<b>Electrical Requirements</b>	(L1, L2, NEU, GND) 208-240 VAC / 1 ph / 60 hz	<b>Operating Weight</b>	1,260 lbs. / 572 kg.

## BOILER TEMPERATURE RISE / PRESSURE DROP

25°F / 13.9°C				30°F / 16.7°C			
Flow Rate***	Total Loss****	Flow Rate***	Total Loss****	Flow Rate***	Total Loss****	Flow Rate***	Total Loss****
GPM	L/s	Ft	kPa	GPM	L/s	Ft	kPa
104.4	6.6	10.6	31.7	87.0	5.5	8.5	25.4

\*\*\* Primary heat exchanger.

\*\*\*\* Includes primary, secondary, mixing valve and piping.

## BOILER / WATER HEATER TRIM & CONTROLS

<b>Main Gas Valve</b>	Dungs MBC-SE	<b>Air Switch</b>	Cleveland NS2
<b>Firing Valve</b>	1 1/4"	<b>Blower Motor</b>	Fasco 1 hp
<b>Ignition Control</b>	Honeywell RM7895C	<b>Relief Valve - CW</b>	3/4" x 3/4" set @ 125 psi
<b>Operating Control</b>	HeatNet®	<b>Relief Valve - CB</b>	1" x 1 1/4" set @ 50 psi
<b>High Limit</b>	Jumo	<b>Flow Switch</b>	TACO
<b>Main Ball Valve</b>	1 1/4"	<b>Pilot Regulator</b>	White-Rodgers 25m
<b>Economizer</b>	RBI-1500	<b>Circulator</b>	TACO 1935 (1 hp) - FLA 14
<b>Mixing Valve</b>	2 1/2"	<b>By-Pass Piping</b>	2 1/2"

## WATER HEATER HOURLY RECOVERY CAPACITY (GPH & LPH)

40°F	22°C	60°F	33°C	80°F	44°C	100°F	56°C	120°F	67°C	140°F	78°C
4,277	16,166	2,851	10,777	2,138	8,083	1,711	6,466	1,426	5,389	1,222	4,619

## A.S.M.E.

<b>ASME Sect IV Htg Surface</b>	161.16 Sq. Ft. / 14.97 Sq. M.	<b>Design Data</b>	Max. 125 psig & 250°F
<b>Water Volume</b>	5 gal. / 18.93 Liters		
<b>Water Volume Secondary HX</b>	5.9 gal. / 22.56 Liters		

\* Includes pump

\*\* For incoming gas pressures lower than 2" W.C. natural or propane, consult factory.

REP FIRM \_\_\_\_\_  
 SUBMITTED BY \_\_\_\_\_  
 JOB NAME \_\_\_\_\_  
 ARCHITECT \_\_\_\_\_  
 ENGINEER \_\_\_\_\_  
 CONTRACTOR \_\_\_\_\_  
 DATE \_\_\_\_\_

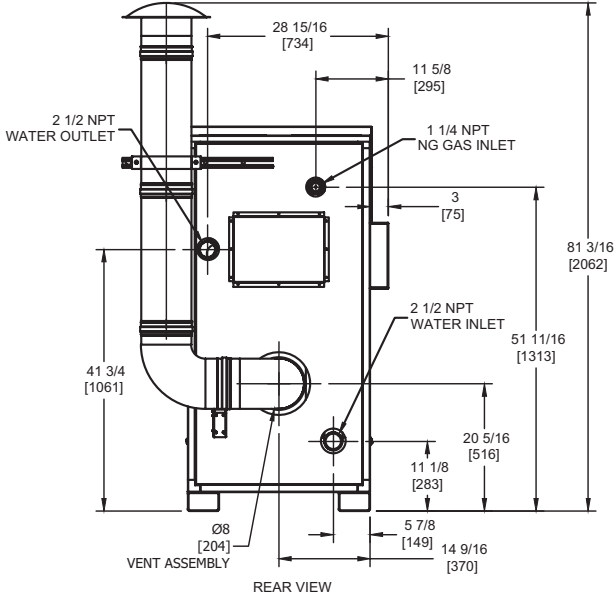
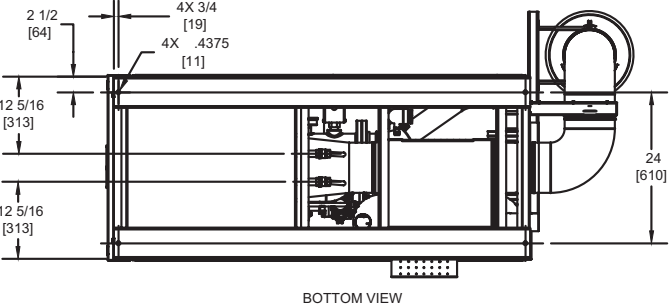
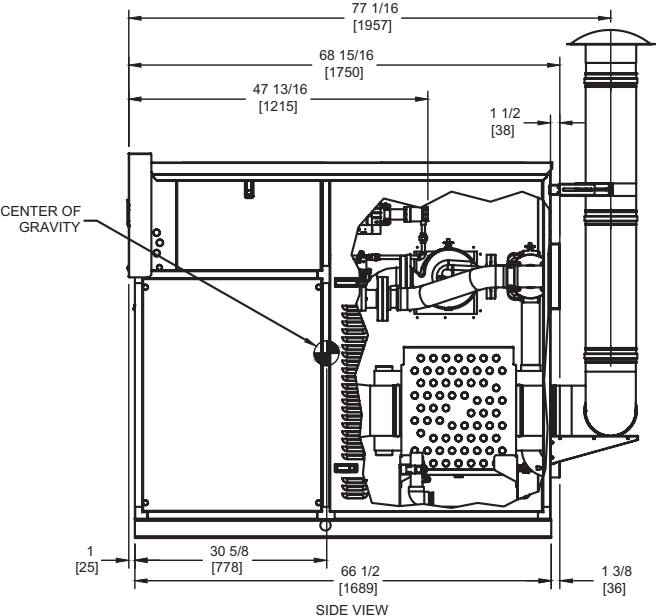
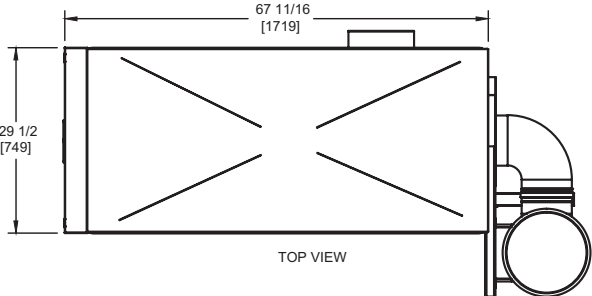
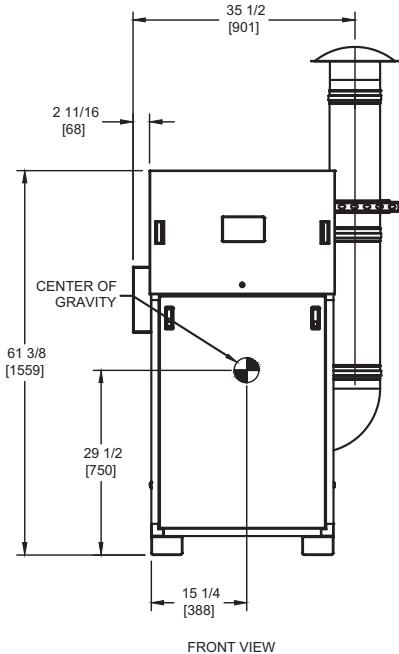
## FUTERA FUSION 1500

**Category II or IV Appliance**  
 (see Installation and Operation Manual for venting information)

**RBI**®  
 RELIABLE. BOLD. INNOVATIVE.

A Division of Mestek, Inc.  
 Westfield, MA 01085  
 (413) 568-9571

# OUTDOOR UNIT



- Notes:**
1. Dimensions are approximate and should not be used to "rough-in" equipment.
  2. Dimensions are subject to change without notice.

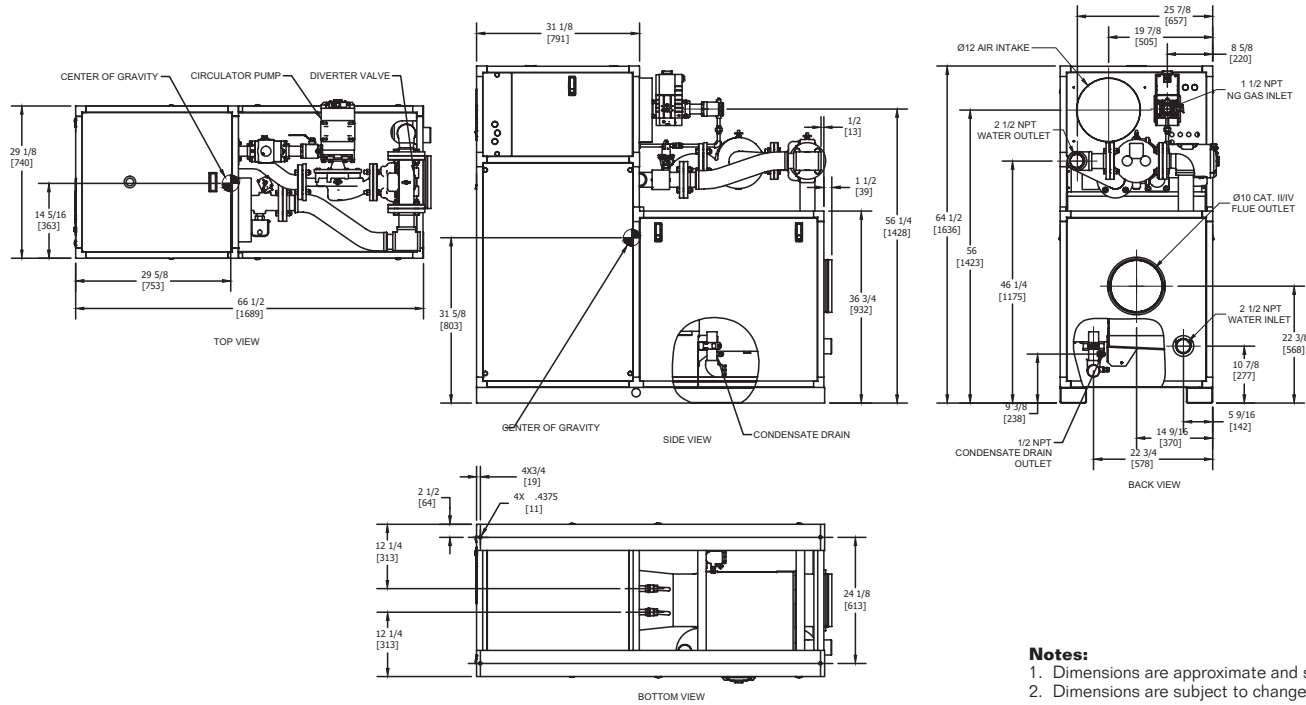
**FUTERA FUSION 1500**

# INDOOR UNIT

RSUB-101 REV H

## CODE OPTIONS

**CSD-1** Manual Reset LWCO



### Notes:

1. Dimensions are approximate and should not be used to "rough-in" equipment.
2. Dimensions are subject to change without notice.

## BOILER CERTIFIED RATINGS & CAPACITIES

<b>Fuel Type</b>	Natural/Propane Gas	<b>Total FLA</b>	18.1* @ 230V
<b>Input BTU/hr.</b>	1,750,000 / 513 kW	<b>Min. Gas Pressure Required</b>	2" W.C.**
<b>Output BTU/hr.</b>	1,667,750 / 489 kW	<b>Max. Gas Pressure Allowed</b>	14" W.C.
<b>Electrical Requirements</b>	(L1, L2, NEU, GND) 208-240 VAC / 1 ph / 60 hz	<b>Operating Weight</b>	1,362 lbs. / 618 kg.

## BOILER TEMPERATURE RISE / PRESSURE DROP

25°F / 13.9°C				30°F / 16.7°C			
Flow Rate***	Total Loss****	Flow Rate***	Total Loss****	Flow Rate***	Total Loss****	Flow Rate***	Total Loss****
GPM	L/s	Ft	kPa	GPM	L/s	Ft	kPa
121.8	7.7	14.7	43.9	101.5	6.4	11.9	35.6

\*\*\* Primary heat exchanger.

\*\*\*\* Includes primary, secondary, mixing valve and piping.

## WATER HEATER HOURLY RECOVERY CAPACITY (GPH & LPH)

40°F	22°C	60°F	33°C	80°F	44°C	100°F	56°C	120°F	67°C	140°F	78°C
4,968	18,781	3,312	12,521	2,484	9,390	1,987	7,512	1,656	6,260	1,420	5,366

## BOILER / WATER HEATER TRIM & CONTROLS

<b>Main Gas Valve</b>	Dungs MBC-SE	<b>Air Switch</b>	Cleveland NS2
<b>Firing Valve</b>	1 1/2"	<b>Blower Motor</b>	Fasco 1 hp
<b>Ignition Control</b>	Honeywell RM7895C	<b>Relief Valve - CW</b>	3/4" x 3/4" set @ 125 psi
<b>Operating Control</b>	HeatNet®	<b>Relief Valve - CB</b>	1" x 1 1/4" set @ 50 psi
<b>High Limit</b>	Jumo	<b>Flow Switch</b>	TACO
<b>Main Ball Valve</b>	1 1/2"	<b>Pilot Regulator</b>	White-Rodgers 25m
<b>Economizer</b>	RBI-2000	<b>Circulator</b>	TACO 1935 (1 hp) - FLA 14
<b>Mixing Valve</b>	2 1/2"	<b>By-Pass Piping</b>	2 1/2"

## A.S.M.E.

<b>ASME Sect IV Htg Surface</b>	188.57 Sq. Ft. / 17.52 Sq. M.	<b>Design Data</b>	Max. 125 psig & 250°F
<b>Water Volume</b>	5.3 gal. / 20.06 Liters		
<b>Water Volume Secondary HX</b>	7.1 gal. / 26.76 Liters		

\* Includes pump

\*\* For incoming gas pressures lower than 2" W.C. natural or propane, consult factory.

REP FIRM \_\_\_\_\_  
 SUBMITTED BY \_\_\_\_\_  
 JOB NAME \_\_\_\_\_  
 ARCHITECT \_\_\_\_\_  
 ENGINEER \_\_\_\_\_  
 CONTRACTOR \_\_\_\_\_  
 DATE \_\_\_\_\_

## FUTERA FUSION 1750

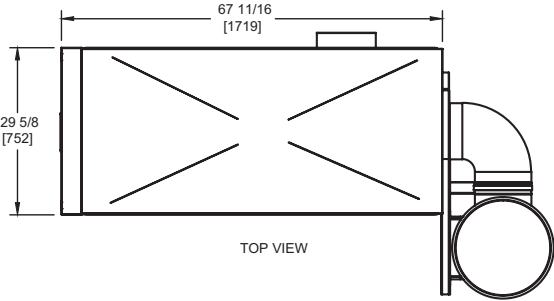
**Category II or IV Appliance**

(see Installation and Operation Manual for venting information)

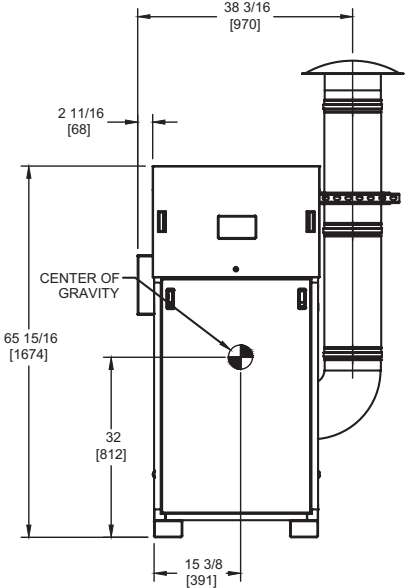
**RBI**®  
 RELIABLE. BOLD. INNOVATIVE.

A Division of Mestek, Inc.  
 Westfield, MA 01085  
 (413) 568-9571

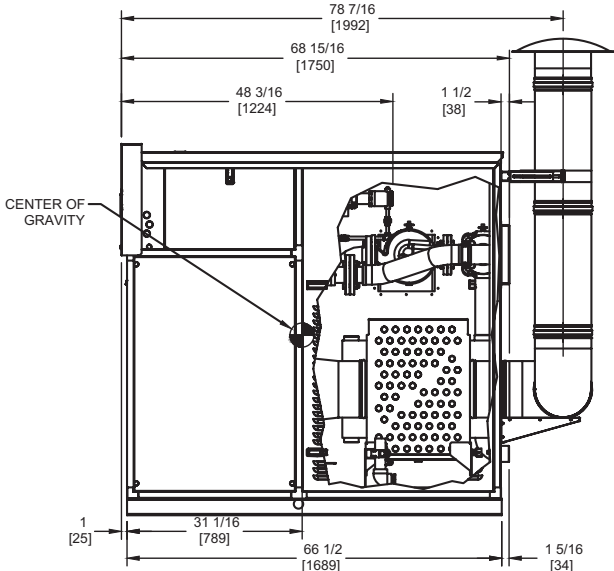
# OUTDOOR UNIT



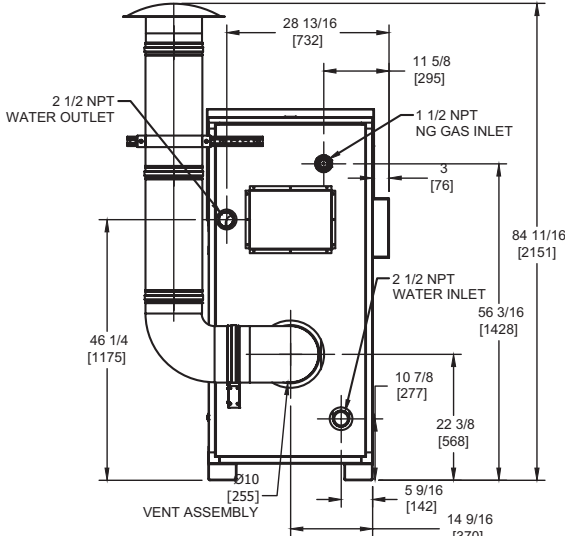
TOP VIEW



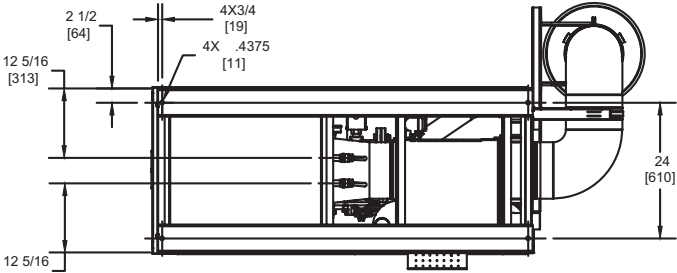
FRONT VIEW



SIDE VIEW



REAR VIEW



BOTTOM VIEW

- Notes:**
1. Dimensions are approximate and should not be used to "rough-in" equipment.
  2. Dimensions are subject to change without notice.

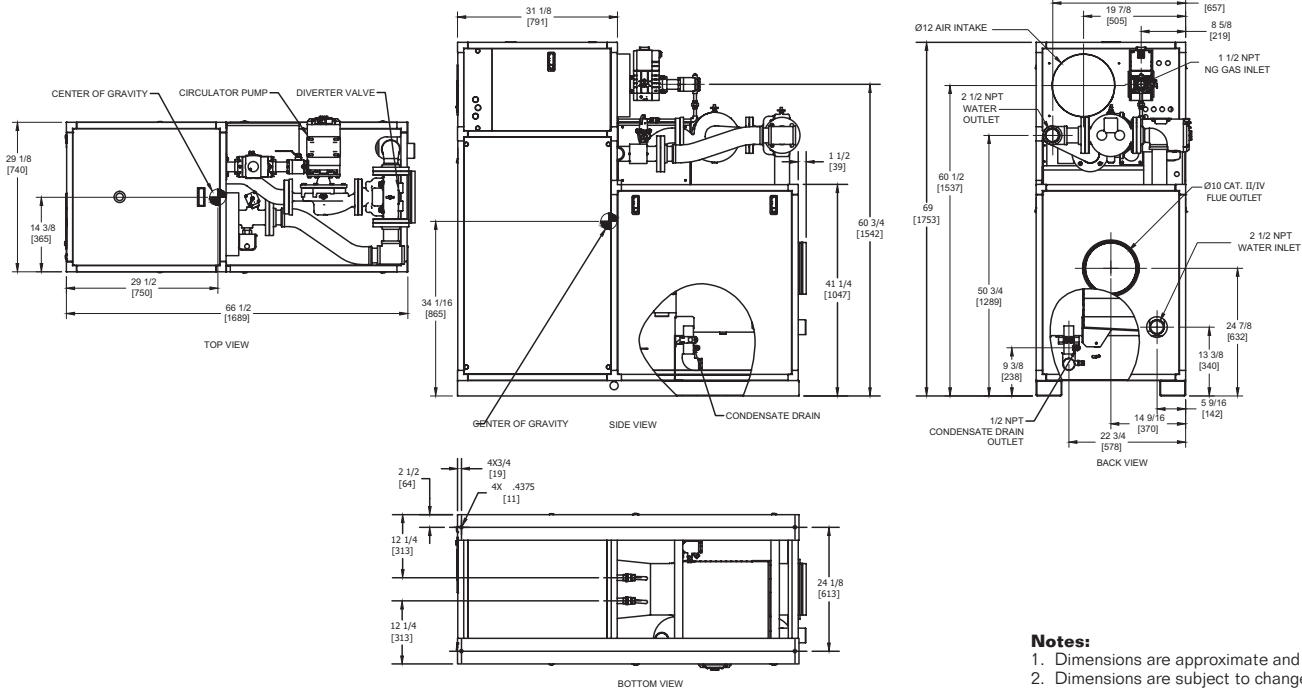
**FUTERA FUSION 1750**

# INDOOR UNIT

RSUB-102 REV H

## CODE OPTIONS

CSD-1 Manual Reset LWCO



### Notes:

1. Dimensions are approximate and should not be used to "rough-in" equipment.
2. Dimensions are subject to change without notice.

## BOILER CERTIFIED RATINGS & CAPACITIES

<b>Fuel Type</b>	Natural/Propane Gas	<b>Total FLA</b>	21.5* @ 230V
<b>Input BTU/hr.</b>	1,999,999 / 586 kW	<b>Min. Gas Pressure Required</b>	2" W.C.**
<b>Output BTU/hr.</b>	1,905,999 / 558 kW	<b>Max. Gas Pressure Allowed</b>	14" W.C.
<b>Electrical Requirements</b>	(L1, L2, NEU, GND) 208-240 VAC / 1 ph / 60 hz	<b>Operating Weight</b>	1,426 lbs. / 647 kg.

## BOILER TEMPERATURE RISE / PRESSURE DROP

30°F / 16.7°C			
Flow Rate***		Total Loss****	
GPM	L/s	Ft	kPa
116.0	7.3	15.7	46.9

\*\*\* Primary heat exchanger.

\*\*\*\* Includes primary, secondary, mixing valve and piping.

## BOILER / WATER HEATER TRIM & CONTROLS

<b>Main Gas Valve</b>	Dungs MBC-SE	<b>Air Switch</b>	Cleveland NS2
<b>Firing Valve</b>	1 1/2"	<b>Blower Motor</b>	Fasco 1 hp
<b>Ignition Control</b>	Honeywell RM7895C	<b>Relief Valve - CW</b>	3/4" x 3/4" set @ 125 psi
<b>Operating Control</b>	HeatNet®	<b>Relief Valve - CB</b>	1" x 1 1/4" set @ 50 psi
<b>High Limit</b>	Jumo	<b>Flow Switch</b>	TACO
<b>Main Ball Valve</b>	1 1/2"	<b>Pilot Regulator</b>	White-Rodgers 25m
<b>Economizer</b>	RBI-2000	<b>Circulator</b>	TACO 1935 (1 1/2 hp) - FLA 15
<b>Mixing Valve</b>	2 1/2"	<b>By-Pass Piping</b>	2 1/2"

## WATER HEATER HOURLY RECOVERY CAPACITY (GPH & LPH)

40°F	22°C	60°F	33°C	80°F	44°C	100°F	56°C	120°F	67°C	140°F	78°C
5,654	21,373	3,770	14,249	2,827	10,687	2,262	8,549	1,885	7,124	1,616	6,107

## A.S.M.E.

<b>ASME Sect IV Htg Surface</b>	215.98 Sq. Ft. / 20.06 Sq. M.	<b>Design Data</b>	Max. 125 psig & 250°F
<b>Water Volume</b>	5.7 gal. / 21.58 Liters		
<b>Water Volume Secondary HX</b>	7.1 gal. / 26.76 Liters		

\* Includes pump

\*\* For incoming gas pressures lower than 2" W.C. natural or propane, consult factory.

**REP FIRM** \_\_\_\_\_  
**SUBMITTED BY** \_\_\_\_\_  
**JOB NAME** \_\_\_\_\_  
**ARCHITECT** \_\_\_\_\_  
**ENGINEER** \_\_\_\_\_  
**CONTRACTOR** \_\_\_\_\_  
**DATE** \_\_\_\_\_

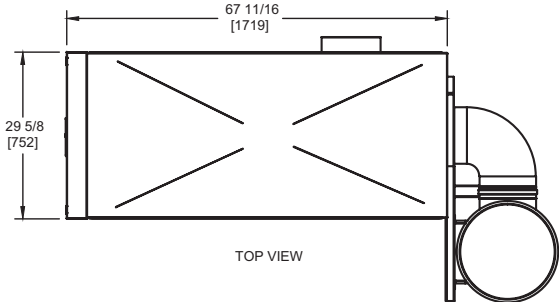
## FUTERA FUSION 2000

**Category II or IV Appliance**  
(see Installation and Operation Manual for venting information)

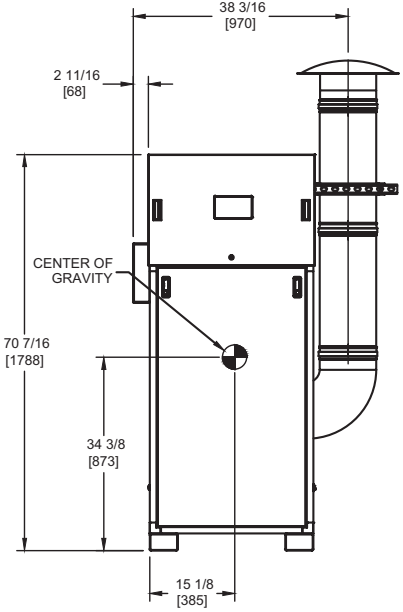


A Division of Mestek, Inc.  
Westfield, MA 01085  
(413) 568-9571

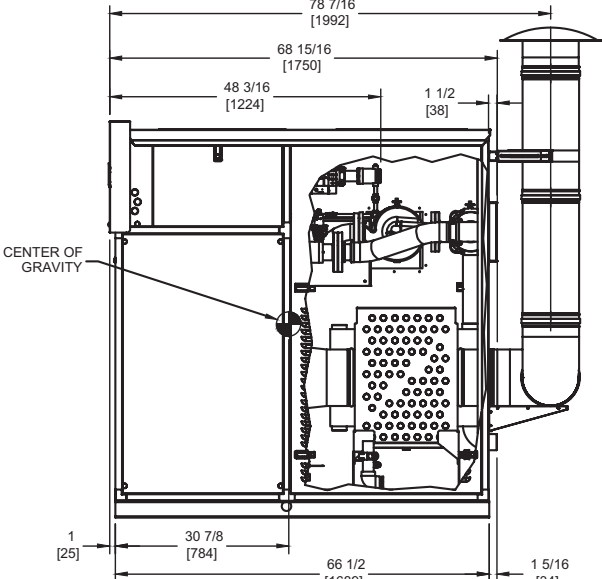
# OUTDOOR UNIT



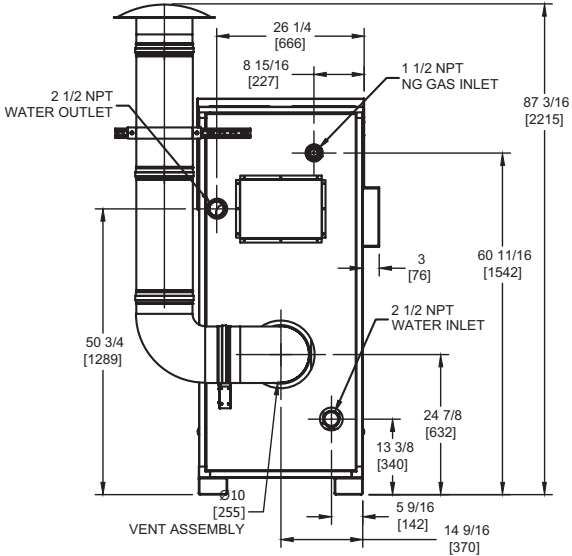
TOP VIEW



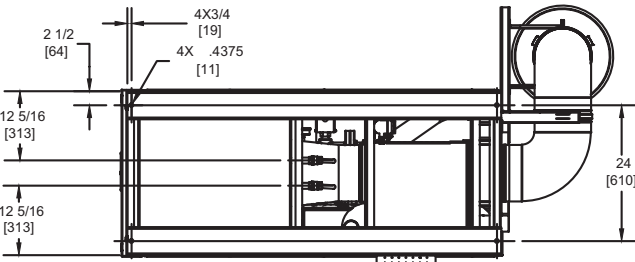
FRONT VIEW



SIDE VIEW



REAR VIEW



BOTTOM VIEW

## FUTERA FUSION 2000

- Notes:**
1. Dimensions are approximate and should not be used to "rough-in" equipment.
  2. Dimensions are subject to change without notice.